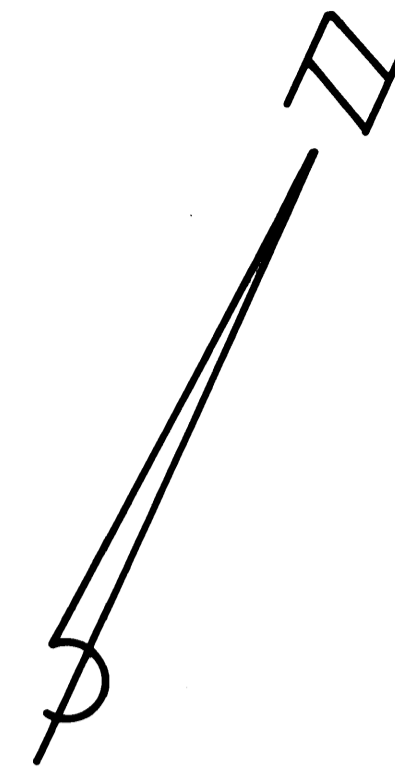
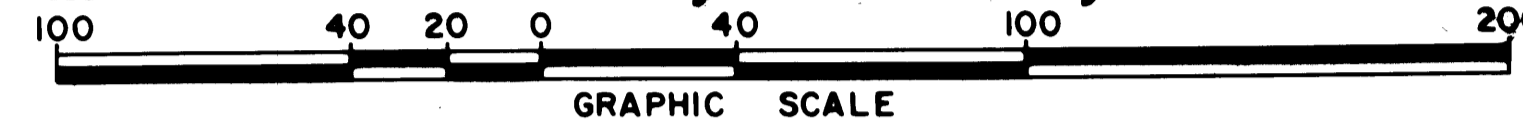


# RIVER PINES

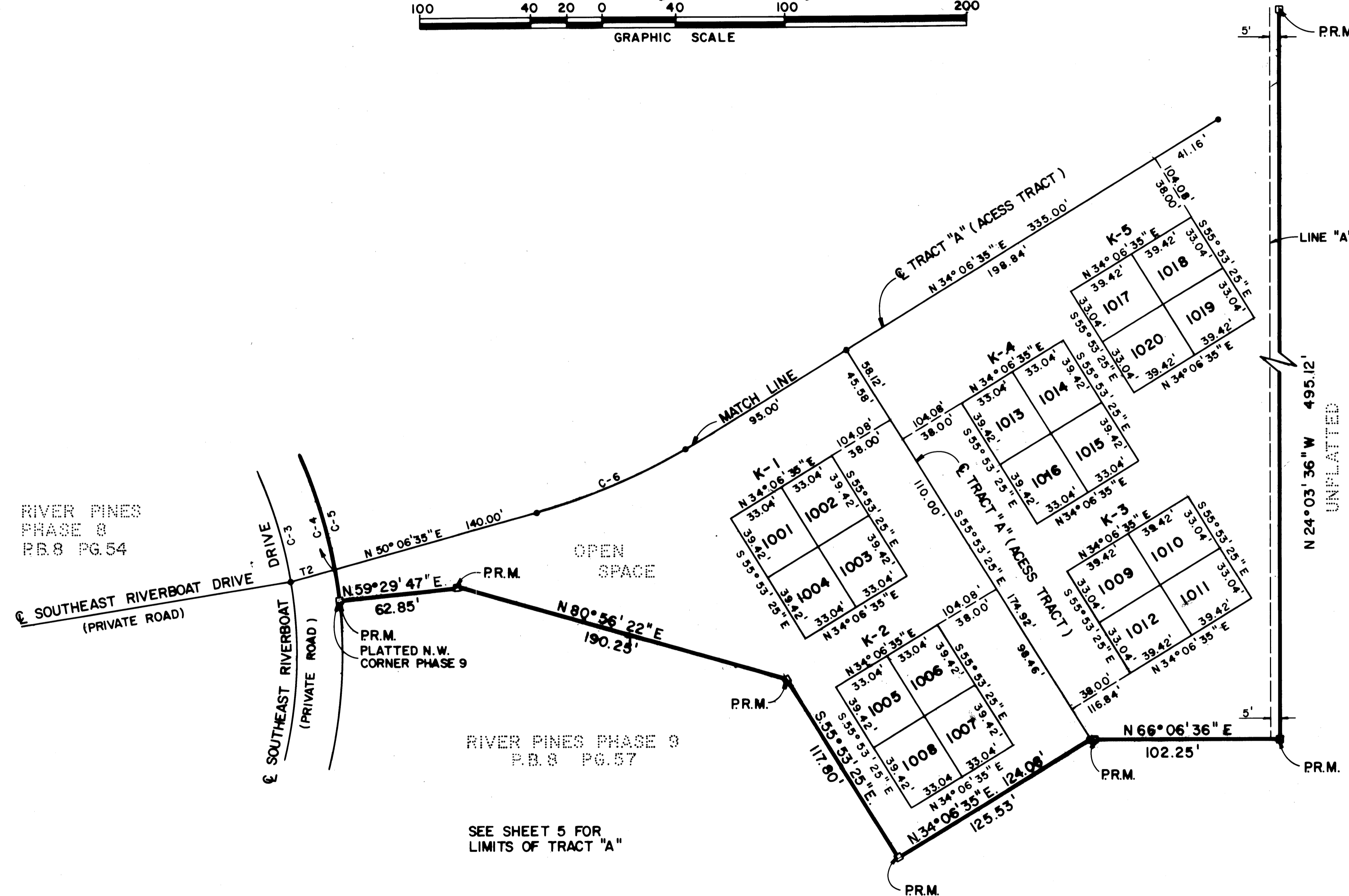
## AT MILES GRANT

### PHASE 10 OF A P.U.D.

A RESUBDIVISION OF GOVERNMENT LOT 3  
 IN SECTION 20, TOWNSHIP 38 SOUTH, RANGE 42 EAST,  
 MARTIN COUNTY, FLORIDA, FEB. 1981



PLB 8  
 PG 63



RIVER PINES  
 PHASE 9  
 P.B. 8 PG. 54

RIVER PINES PHASE 9  
 P.B. 8 PG. 57

SEE SHEET 5 FOR  
 LIMITS OF TRACT "A"

- NOTE:
- FOR CURVE TABLES AND NOTES SEE SHEET 1 OF 5.
  - LINE "A" - NO BUILDINGS ARE PERMITTED EASTERLY OF LINE "A".

<b>ADAIR &amp; BRADY, INC.</b> CONSULTING ENGINEERS & LAND SURVEYORS <small>LAKE WORTH WEST PALM BEACH ORLANDO</small>		<b>RIVER PINES</b> AT MILES GRANT	
SCALE: 1" = 40' JOB NO: 6-8525D	DWN: M.W. CHKD: J.G.A.	DATE: 2/81 DATE: 2/81	SHEET FP 1155 3 OF 5